

MASONIC TEMPLE

ALCESTER ROAD SOUTH,
KINGS HEATH.

OPENING CEREMONY
AND
DEDICATION

SATURDAY, AUGUST 28th., 1937.

DEDICATION

of the

MASONIC TEMPLE

at

ALCESTER ROAD SOUTH, KINGS HEATH,

on

SATURDAY, AUGUST 28th, 1937, at 5.30 p.m.

by

The R. W. Bro. General Sir FRANCIS J. DAVIES,
K.C.B., K.C.M.G., K.C.V.O., V.L., Deputy Grand Master,
Provincial Grand Master.

assisted by

W. Bro. ALFRED ALLEN, P.G.D.,
Dep. P.G.M.

W. Bro. C. D. EATON, P.G.D.	as S.W.
W. Bro. W. HARVEY GIBBS, P.A.G.Std.B.	as J.W.
W. Bro. Rev. R. A. HANSON, A.G. Chap.	as Chaplain
W. Bro. WALTER HENSON, P.P.C.P.	as Secretary
W. Bro. FRANK WILSON, Prov. G.D.C.	as D.C.
W. Bro. F. D. KATCLIFF, P.G.Std.B.	as S.D.
W. Bro. J. LUCKING, P.G.Std.B.	as J.D.
W. Bro. W. H. MYNOCKS, Prov. Dep. D.C.	as Asst. D.C.
Bro. G. H. MANSILL, Prov. G. Org.	as Organist
W. Bro. E. G. APPERSON, P.A.G.Std.B.	as Inner Guard

Under the Banners of

The Lechmere Volunteer Lodge	No. 1874
The Masefield Lodge	No. 2034
The Arter Lodge	No. 2654
The Campbell Lodge	No. 3643
The Kings Heath Lodge	No. 3863
The Lodge of the Mystic Quest	No. 3873
The St. Mary's Lodge	No. 3879
The Pro Patria Lodge	No. 4144
The Francis Davies' Lodge	No. 5035
The Lodge of St. Oswald	No. 5094
The Moseley Lodge	No. 5224
The Silver Jubilee Lodge	No. 5531
The James Watt Lodge	No. 5546

Order of Procedure

The Brethren will assemble in the Lodge Room.

The Dedicating Officer will enter in procession with the Officers of Grand Lodge and Officers assisting in the Dedication, take the Chair and appoint his Officers.

A Lodge will be opened in the Three Degrees by The Right Worshipful Deputy Grand Master.

Opening Hymn

*Hail Eternal, by Whose aid
All created things were made ;
Heaven and Earth Thy vast design,
Hear us, Architect Divine.*

*May our work begin in Thee
Ever blessed with order be ;
And may we when labor's cease
Part in harmony and peace.*

*By Thy glorious Majesty
By the trust we place in Thee,
By the badge and mystic sign,
Hear us, Architect Divine,*

SO MOTE IT BE.

The Director of Ceremonies will call upon the Brethren to salute The Right Worshipful Deputy Grand Master, The Deputy Provincial Grand Master and Grand Lodge Officers, according to antient form.

The Dedicating Officer will proceed to the Organ.

The Dedicating Officer will call upon the Chaplain for

Prayer

*Great Architect of the Universe, Who didst appoint for the Levites
instruments of music, to praise Thee because Thy mercy endureth
for ever, graciously vouchsafe to receive at our hands this Organ,
which we dedicate unto Thy service, that we may sing our hymns
theeto in this Temple ; and grant us so to sing with the spirit and
understanding also, that we may be numbered amongst them who
shall sing the new song before Thy Throne, where Thou reignest God
for ever and ever.*

SO MOTE IT BE.

The Dedicating Officer

*In the Name of The Great Architect Of The Universe and to His Glory,
and for the use and inspiration of Masonry in general, the Brethren of
The Worcestershire Province in particular, and most especially those
Brethren who regularly assemble here, I dedicate this Organ.*

The Dedicating Officer will resume his place.

Hymn

*Let the whole creation cry
"Glory to the Lord on high!"
Heaven and earth, awake and sing,
"God is good and therefore King."
Praise Him, all ye hosts above,
Ever bright and fair in love;
Sun and moon, uplift your voice,
Night and stars, in God rejoice!*

*Warriors fighting for the Lord,
Prophets burning with His Word,
Those to whom the arts belong,
Add their voices to the song.
Kings of knowledge and of law,
To the glorious circle draw;
All who work and all who wait,
Sing, "The Lord is good and great!"*

SO MOTE IT BE

The Dedicating Officer will address the Brethren on the motive of the meeting and call upon the Chaplain to give the

Opening Prayer

Almighty and Eternal God, Great Architect of the Universe, who dost from Thy throne behold all dwellers upon Earth, direct us in all our doings with Thy most gracious favour, and further us with Thy continual help, that in all our works begun, continued and ended in Thee, we may glorify Thy Holy Name.

Chant (*Omnes*)—"So mote it be."

The Director of Ceremonies will present the Architect of the Building (Bro. L. R. McFARLANE), to the Dedicating Officer.

The Architect will present the plan of the completed structure to the Dedicating Officer.

The Dedicating Officer will address the Architect.

The Chairman of Directors will address the Dedicating Officer and request him to Dedicate the Temple to Masonic purposes.

The Director of Ceremonies will request the Representatives of the Brethren to stand in the body of the Lodge.

The Dedicating Officer will enquire of them if it is their wish that the Temple be so Dedicated.

The Representatives will signify their assent in Masonic form and resume their seats.

The Dedicating Officer signifies his consent to Dedicate the Temple and will call upon the Chaplain for

The Oration

Anthem

*Except the Lord build the House, their labour is but lost that build it;
Except the Lord keep the City, the watchman waketh but in vain.
To God, the only Wise; our Creator and Redeemer, glory be
As it was in the beginning, is now, and ever shall be, world without end.*

SO MOTE IT BE.

Dedication Prayer (First Portion)

Almighty Architect of the Universe, Searcher and Ruler of all Worlds, deign from Thy celestial abode, from realms of light and glory, to bless us in all the purposes of our assembly. Permit us, O Thou Author of light and life, great source of love and happiness, to dedicate this Temple and consecrate it to the Honour and Glory of Thy Most Holy Name.

Chant (*Omnes*)—"So mote it be."

Musical Response—GLORY BE TO THEE, O GOD.

The Brethren will turn towards the East whilst the Dedicating Officer pronounces

The Invocation

O Lord God, there is no other God like unto Thee in Heaven, above or in the Earth beneath.

Who keepeth covenant and sheweth mercy unto Thy servants who wait before Thee with all their hearts.

Let all the people of the Earth know that the Lord He is God, and that there is none else.

Let all the people of the Earth know Thy Name and fear Thee.

Let all the people of the Earth know that we have built this house and are consecrating it to Thy service.

But wilt Thou, O God, indeed dwell upon the Earth?

Behold, the Heaven, and the Heaven of Heavens cannot contain Thee, how much less this house that we have built.

Yet, have respect unto our prayer and supplication, and hearken unto our cry.

May Thine eyes be opened towards this House by night as well as by day, and when Thy servants shall pray to Thee from this House, hearken unto their supplications, bear them in Heaven, Thy dwelling-place, and when Thou hearest, forgive.

Chant (*Omnes*)—"So mote it be."

The Chaplain will read :—2 Chron., Chap. vi, verses 40 to 42 ; Chap. vii, verse 1 to 7.

The Dedicating Officer will direct that the Tracing Board be uncovered.

The Dedicating Officer and Wardens will take up their positions.

The Chaplain will read :—Psalm lxxii, verse 16.

The Brethren will sing :—

*When once of old in Israel,
Our early Brethren wrought with toil,
Jehovah's blessings on them fell
In showers of Corn, and Wine, and Oil.*

The vessels containing the elements of Consecration will be carried round the Lodge, the Dedicating Officer scattering Corn—the symbol of Plenty, and saying :—

I scatter Corn on this Temple as a symbol of Plenty and Abundance. May the Blessings of Morality and Virtue increase under its auspices, producing fruit an hundredfold.

I now Dedicate this Temple to FREEMASONRY, to the service of The Great Architect Of The Universe, to the purpose of that great Brotherhood which seeks by faith in God to promote goodwill among men, and to inculcate the purest principles of Piety and Virtue.

Musical Response—GLORY BE TO GOD ON HIGH.

The Chaplain will read Nehemiah, Chap. x, verse 39.

The Brethren will sing :—

*When there, a sbrine to Him alone
They built with worship, sin to foil,
On Threshold and on Corner-stone,
They poured out Corn, and Wine, and Oil.*

The vessels containing the elements of Consecration will be carried round the Lodge, the Dedicating Officer pouring Wine—the symbol of Joy and Cheerfulness, and saying :—

I pour Wine on this Temple as a symbol of Joy and Cheerfulness. May Gladness and Rejoicing fill the hearts of its members.

I now Dedicate this Temple to VIRTUE. May the symbolism of the Craft and the Ceremonies which will be performed within these walls, teach and inspire the practice of every social and moral virtue.

Musical Response—GLORY BE TO GOD ON HIGH.

The Chaplain will read Exodus, Chap. xxx, verses 25 and 26.

The Brethren will sing :—

*As we have come, fraternal bands,
With joy and pride, and prosperous spoil,
To honour Him by votive hands,
With streams of Corn, and Wine, and Oil.*

The vessels containing the elements of Consecration will be carried round the Lodge, the Dedicating Officer pouring Oil—the symbol of Peace and Unanimity, and saying :—

I pour Oil on this Temple as a symbol of Peace and Unanimity. May Peace rest and abide with its members always.

I now Dedicate this Temple to the cause of UNIVERSAL BENEVOLENCE. May the principles of Brotherly Love, Relief, and Truth, lead those who are taught within these walls to act with kindness towards all living creatures.

Musical Response—GLORY BE TO GOD ON HIGH.

The Dedicating Officer and Wardens will resume their places.

Sanctus

*Holy, Holy, Holy, Lord God Almighty,
Heaven and Earth are full of Thy glory,
Glory be to Thee, O Lord, most high.*

The Chaplain takes the Censer thrice round the Temple and halts in the East.

Dedication Prayer (Second Portion)

Grant, O Most High, that all those who shall bear Office in the Temple, may be endued with wisdom to instruct their Brethren in all their duties. Sanctify with Thy grace all the members of the Fraternity who shall meet here, so that Brotherly Love, Relief and Truth may ever prevail amongst them. And grant that when the Labour of this life is ended they may leave this earthly abode for Thy Heavenly Temple, there to enjoy light, joy and bliss for evermore.

Chant (*Omnes*)—"So mote it be."

Anthem

I have surely built Thee an house to dwell in—a fitted place for Thee to abide in for ever.

But will God indeed dwell on the Earth? Behold, the Heavens of Heavens cannot contain Thee; how much less the house that I have builded?

And the Lord said to Solomon: "I have heard thy prayer, I have hallowed this house, which thou hast built, to put my Name there for ever, and mine eye and mine heart shall be there perpetually."

SO MOTE IT BE.

The Dedicating Officer will leave the Lodge to unveil the Commemoration Tablet, which reads:—

"This Masonic Temple was Dedicated by
General Sir Francis John Davies, K.C.B., K.C.M.G., K.C.V.O., V.L.,
Deputy Grand Master, Provincial Grand Master for Worcestershire,
August 28th, 1937."

AUDI.

VIDE.

TACE.

The Dedicating Officer will return to the Lodge.

Patriarchal Benediction

May the God of our Fathers, the God of Abraham, the God of Isaac and the God of Jacob, the Angel of the everlasting Covenant, who has redeemed us from evil; the Holy One who sanctifieth us, bless, preserve and keep you evermore.

Chant (*Omnes*)—"So mote it be."

The Dedicating Officer will close the Lodge in the third and second degrees.

The Secretary will announce offers of gifts.

The Dedicating Officer will accept the gifts on behalf of the Board of Directors.

Closing Hymn

*Now thank we all our God,
With hearts and hands and voices,
Who wondrous things hath done,
In Whom His World rejoices :
Who from our mother's arms
Hath blessed us on our way
With countless gifts of love,
And still is ours' to-day.*

*O may this bounteous God
Through all our life be near us,
With ever joyful hearts
And blessed peace to cheer us ;
And keep us in His grace,
And guide us when perplexed,
And free us from all ills
In this world and the next.*

SO MOTE IT BE.

The Dedicating Officer will close the Lodge.

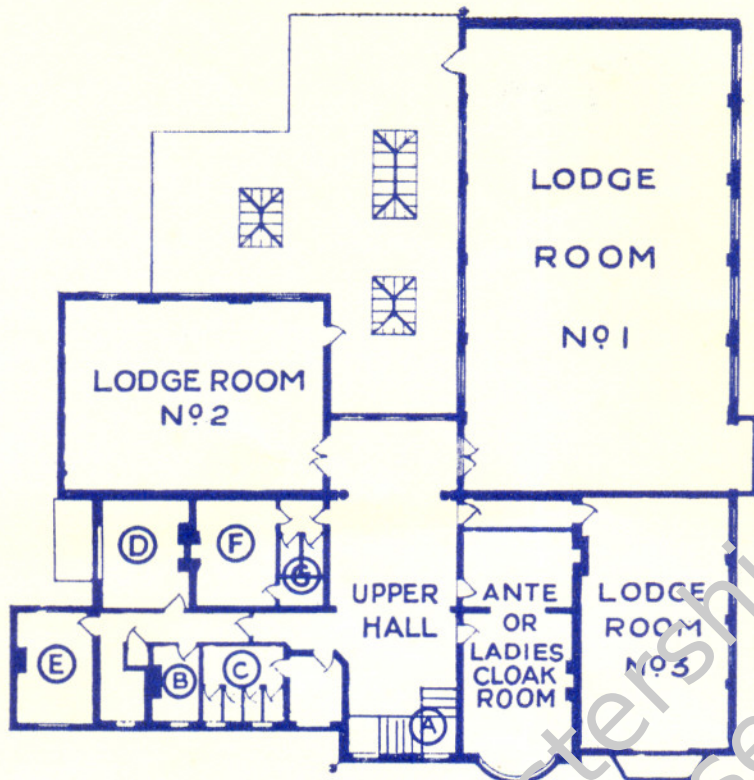
National Anthem

*God save our gracious King,
Long live our noble King,
God save the King.
Send him victorious,
Happy and glorious,
Long to reign over us ;
God save the King.*

*Thy choicest gifts in store
On him be pleased to pour ;
Long may he reign.
May he defend our laws,
And ever give us cause
To sing with heart and voice,
God save the King.*

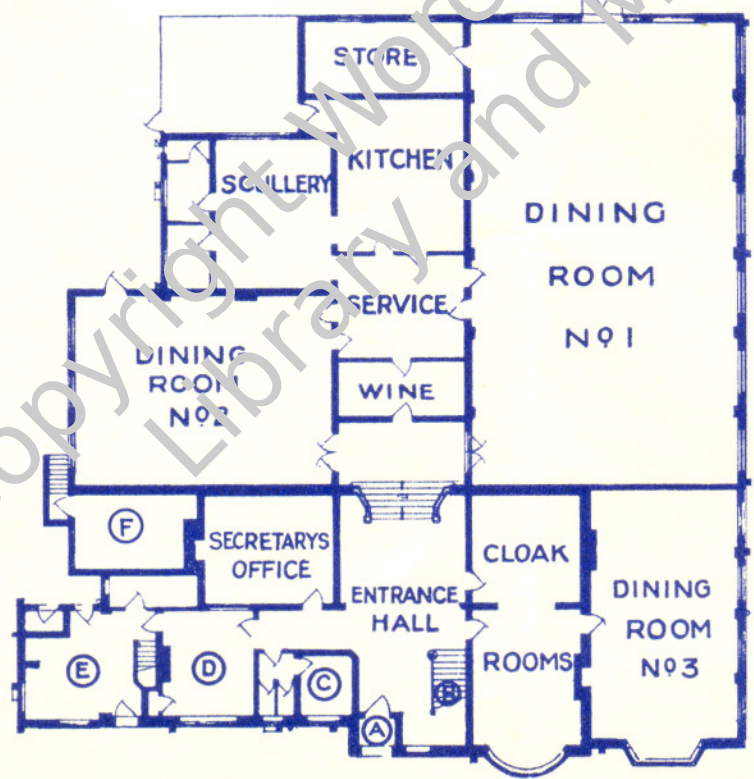
The Dedicating Officer, accompanied by Grand and Provincial Grand Lodge Officers, will retire from the Temple.

Copyright Worcester State Masonic
Library and Museum Trust



FIRST FLOOR PLAN.

- A. Stairs.
- B. Bathroom
- C. Lavatories.
- D. Caretakers Rooms.
- E. Rooms.
- F. Store.
- G. Candidates Rooms.



GROUND FLOOR PLAN.

- A. Entrance.
- B. Stairs.
- C. Lavatories.
- D. } Caretakers
- E. } Rooms.
- F. Heating Chamber.