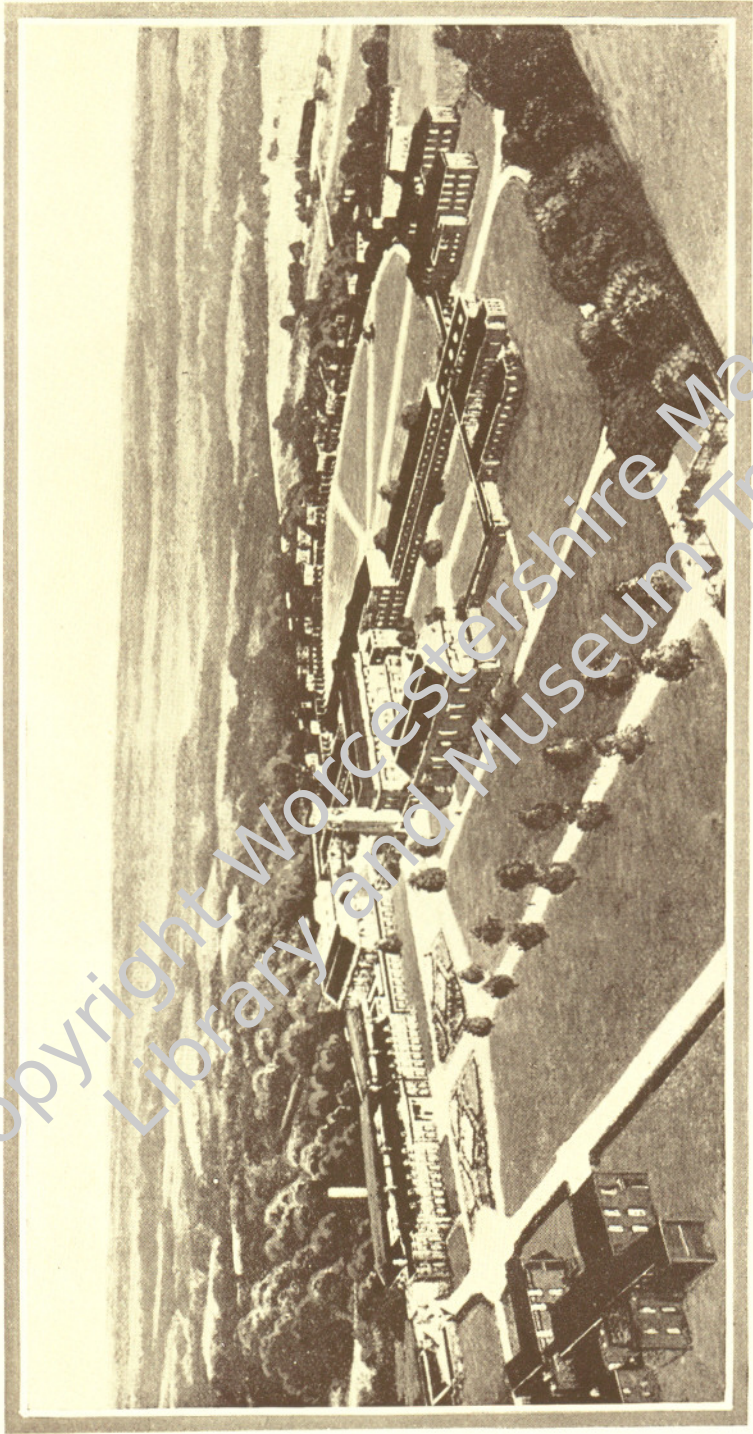


Copyright Worcestershire Masonic
Library and Museum Trust

16th JULY 1930



AN ARTIST'S CONCEPTION OF THE NEW SENIOR SCHOOL
From the design of the Architect (Messrs. Deaman and Son, of Fribourg)

THE ROYAL MASONIC
INSTITUTION FOR GIRLS
NEW SENIOR SCHOOL
RICKMANSWORTH PARK

CEREMONY
OF LAYING THE
FOUNDATION STONE

WITH MASONIC CEREMONIAL

BY
FIELD MARSHAL

HR.H. THE DUKE OF CONNAUGHT K.G.

MOST WORSHIPFUL GRAND MASTER
PRESIDENT OF THE INSTITUTION

16TH JULY 1930

The Maul which will be used in the Ceremony was originally used by an ancient Egyptian workman in a Tomb at Sakkara some 4,000 years ago.

Copyright Worcestershire Masonic
Library and Museum Trust

THE M.W. THE GRAND MASTER

WITH THOSE BRETHREN ASSISTING IN THE CEREMONY
WILL ENTER IN THE FOLLOWING ORDER :

THE DEPUTY GRAND DIRECTORS OF CEREMONIES
(SIR GEORGE M. BOUGHEY, Bt., C.B.E. GEORGE AYLWEN.)

THE GRAND TYLER
(MAJOR JOHN BOYD, M.C.)

FOUR GRAND STEWARDS
(D. CAMPBELL LEE. W. H. SPARKS.)
(R. H. REECE, M.D., F.R.C.S. COL. E. G. DUNN, D.S.O.)

FOUR ASSISTANT GRAND DIRECTORS OF CEREMONIES
(F. E. NEWSON-SMITH. F. D. BOLTON.)
(C. W. EVANS. E. H. BERESFORD, M.R.C.S.)

TWO JUNIOR GRAND DEACONS
(T. G. STEVENS, M.D., F.R.C.S. R. M. ROWLEY-MORRIS.)

FOUR MASTERS OF LODGES, bearing the Cornucopia, Ewers
with Wine and Oil, and Vessel with Salt
(J. GRAHAM WELLS, Watford Lodge, No. 404)
(ARTHUR MANN, Lodge of Emulation, No. 299)
(C. H. WILLIAMSON, Cardonian Lodge, No. 134)
(MAJOR B. L. FLETCHER, St. George's Lodge of Harmony, No. 32)

THE ASSISTANT GRAND SECRETARY with the Trowel
(SIDNEY A. WHITE)

THE GRAND SUPERINTENDENT OF WORKS with the Plans
(A. BURNETT BROWN)

THE PRESIDENT OF THE BOARD OF BENEVOLENCE
with the Coins to be placed in the Casket
(SIR KYNASTON STUDD, Bt., O.B.E.)

THE GRAND SECRETARY with the Plate
(SIR COLVILLE SMITH, C.V.O.)

THE PRESIDENT OF THE BOARD OF GENERAL PURPOSES
with the Roll of Papers to be placed in the Casket
(SIR ALFRED ROBBINS, F.J.I.)

THE GRAND REGISTRAR with the Great Seal
(E. A. MITCHELL INNES, C.B.E., K.C., D.L.)

THE GRAND TREASURER with the Casket to be deposited in
the Stone
(MATTHEW H. CLARKE)

THE GRAND CHAPLAIN, bearing the Volume of the Sacred Law
(The Rev. PREBENDARY S. R. CARDEN, M.A.)

THE JUNIOR GRAND WARDEN with the Plumb Rule
(THE HON. M. C. ELIOT, C.V.O.)

THE ACTING SENIOR GRAND WARDEN with the Level
(ADMIRAL SIR LIONEL HALSEY, G.C.M.G., G.C.V.O., K.C.I.E.,
C.B., R.N.)

THE DEPUTY GRAND MASTER with the Square
(THE RT. HON. LORD CORNWALLIS, C.B.E.)

THE PRO GRAND MASTER with the Maul
(THE RT. HON. LORD AMPHILL, G.C.S.I., G.C.I.E.)

THE GRAND SWORD BEARER
(COLONEL E. H. FLEY, C.M.G., C.B.E., A.D.C., D.S.O.)

THE MOST WOFSHIPFUL THE GRAND MASTER
Field-Marshal H.R.H. The Duke of Connaught, K.G.

THE GRAND STANDARD BEARERS
(J. A. KENNINGHAM. G. S. WEST.)

EQUERRY
(LT.-COL. SIR MALCOLM D. MURRAY, K.C.V.O., C.B., C.I.E.)

TWO SENIOR GRAND DEACONS
(SIR ALFRED W. F. BAGGE, Bt. SIR FRANCIS H. GREEN, Bt.)

TWO ASSISTANT GRAND DIRECTORS OF CEREMONIES
(JOHN McCREA, M.B. E. BALDING.)

TWO GRAND STEWARDS
(W. S. MAY. SIR JOHN PAGE-WOOD, Bt.)

THE GRAND DIRECTOR OF CEREMONIES
(CHARLES R. I. NICHOLL)

The Rt. Hon. Lord Marshall of Chipstead, P.C., K.C.V.O., LL.D., D.C.L., P.G.W., Patron and Treasurer of the Institution, will request the M.W. The Grand Master to lay the Foundation Stone.

The M.W. The Grand Master will signify his willingness to do so.

The M.W. The Grand Master will direct the Stone to be raised.

The M.W. The Grand Master will address the Assembly

Prayer by the Grand Chaplain :

“ Almighty and Eternal God, Great Architect of the Universe, who dost from Thy Throne behold all dwellers upon Earth, direct us in all our doings with Thy most gracious favour, and further us with Thy continual help, that in all our works begun, continued and ended in Thee, we may glorify Thy Holy Name” *So mote it be.*

The M.W. The Grand Master will pass to the Stone.

The President of the Board of Benevolence will place the Coins in the Casket.

The President of the Board of General Purposes will place the Roll of Papers in the Casket.

The Grand Treasurer will place the Casket in the Cavity.

The M.W. The Grand Master will ask the Grand Secretary to read the inscription on the Stone, and place the Plate over the Cavity.

The Assistant Grand Secretary will hand the Trowel to the Architect.

The Architect will present the Trowel to the M.W. The Grand Master.

The M.W. The Grand Master will spread the cement on the lower stone with the Trowel.

The Upper Stone will then be lowered by three distinct movements and adjusted by the Grand Superintendent of Works.

The Bearers of the Maul, Square, Level and Plumb Rule will take up their positions.

The M.W. The Grand Master will adjust the Stone by striking it on the four corners with the Maul handed to him for the purpose, saying : " With Temperance, Fortitude, Prudence and Justice let our work be founded."

The Junior Grand Warden will hand the Plumb Rule to the M.W. The Grand Master, who will prove the Stone Plumb.

The Acting Senior Grand Warden will hand the Level to the M.W. The Grand Master, who will prove the Stone Level.

The Deputy Grand Master will hand the Square to the M.W. The Grand Master, who will prove the Stone Square.

The M.W. The Grand Master will strike the Stone three times with the Maul handed to him for the purpose, saying : " By the power in me vested, and in the name of the Great Architect of the Universe, I declare this Stone well and truly laid."

The Grand Superintendent of Works (presenting the suggested Plans) says : " M.W. Grand Master, deign to inspect the whole Design."

The M.W. The Grand Master : " I will do so with pleasure " (inspects the Plans and hands them back). " With the implements of our Craft and these instructions, may there be raised a superstructure, perfect in its parts and honourable to the builders."

The Bearers of the Vessels containing the Corn, Wine, Oil and Salt will take up their positions.

The Grand Chaplain : " There shall be an handful of CORN in the earth, upon the top of the mountains ; the fruit thereof shall shake like Lebanon ; and they of the City shall flourish like grass of the earth." (Psalm LXXII, v. 16.)

The Brethren will sing :

" When once of old in Israel,
Our early Brethren wrought with toil,
Jehovah's blessings on them fell,
In showers of Corn and Wine and Oil."

The Vessels will be carried round the Stone and the Cornucopia containing the Corn will be presented to the M.W. The Grand Master.

The M.W. The Grand Master : " I scatter Corn on this Stone, the emblem of plenty, and may the all Bounteous Creator of the Universe shower down His choicest blessings on the members of His Community, and all who shall assemble in this building to the Glory of the Most High, until time shall be no more."

The Grand Chaplain : " And for a drink offering, thou shalt offer the third part of an hin of WINE, for a sweet Saviour unto the Lord." (Numbers, Chap. XV, v. 7.)

The Brethren will sing :

" When there a Shrine to Him alone,
They built with worship sin to foil,
On threshold and on Corner stone,
They poured out Corn and Wine and Oil."

The Vessels will be carried round the Stone, and the Ewer containing the Wine will be presented to the M.W. The Grand Master.

The M.W. The Grand Master : " I pour wine on this Stone, the emblem of joy and gladness, and may He whose name is Love, grant that we may be all of one heart and mind, and may we ever dwell together in peace and unity."

The Grand Chaplain : " And thou shalt make it an OIL of Holy ointment, an ointment compounded after the art of the apothecary, which shall be an Holy anointing Oil. And thou shalt anoint the Tabernacle of the Congregation therewith, and the Ark of the Testimony." (Exodus, Chap. XXX, v. 25 and 26.)

The Brethren will sing :

" And we have come, fraternal bands,
With joy and pride, and prosperous spoil,
To honour Him with votive hands,
With streams of Corn and Wine and Oil."

The Vessels will be carried round the Stone, and the Ewer containing the Oil will be presented to the M.W. The Grand Master.

The M.W. The Grand Master : " I pour Oil on this Stone, the emblem of charity, and may God give us grateful hearts, and may we be ever ready cheerfully to relieve the wants of others "

The Grand Chaplain : " And every oblation of thy meat offering shalt thou season with SALT, neither shalt thou suffer the Salt of the Covenant of thy God to be lacking from thy meat offering. With all thine offerings thou shalt offer Salt." (Leviticus, Chap. II, v. 13.)

The Brethren will sing :

" Now o'er our work this Salt we shower,
Emblem of Thy conservant power,
And may Thy presence, Lord, we pray,
Keep this, our Building, from decay."

The Vessels will be carried round the Stone, and the Vessel containing the Salt will be presented to the M.W. The Grand Master.

The M.W. The Grand Master : " I sprinkle Salt on this Stone, the emblem of hospitality and friendship, and may the all Bounteous Author of Nature bless this District, the Country, and Kingdom at large with abundance of corn, wine and oil, and all the necessaries, comforts and conveniences of life. And may the Almighty Architect of the Universe look down with benignity upon our present undertaking, and crown the edifice of which we have now laid the Foundation with every success."

The M.W. The Grand Master will return to his Chair.

Prayer by the Grand Chaplain :

" Blessed be Thy Name, O Lord God, for that it hath pleased Thee to have Thy habitation among the sons of men upon earth, and to dwell in the midst of their assemblies. Bless, we beseech Thee, the work we have this day begun in Thy name. May the Edifice about to be erected on this foundation stone be completed to Thy Honour and Glory, and may those who shall hereafter use the building, dedicate and devote their lives to Thy service, and evermore praise and magnify Thy Holy Name" *So mote it be.*

The Grand Chaplain will pronounce the Benediction :

" May the God of our Fathers, the God of Abraham, the God of Isaac, and the God of Jacob, the Angel of the Everlasting Covenant, who has redeemed us from evil, the Holy One who sanctifieth us, Bless, Preserve, and keep you evermore." *So mote it be.*

M.W.Bro. The Rt. Hon. The Earl of Donoughmore, K.P., P.C., P.G.W., M.W. Grand Master of Ireland, Patron and Trustee of the Institution, will address the M.W. The Grand Master.

The M.W. The Grand Master will reply.

HYMN - - - "Now Thank we all Our God."

Now thank we all our God,
With hearts and hands and voices,
Who wondrous things hath done,
In Whom His world rejoices :
Who from our mothers' arms
Hath blessed us on our way
With countless gifts of love,
And still is ours to-day.

O may this bounteous God
Through all our life be near us,
With ever joyful hearts
And blessed peace to cheer us ;
And keep us in His grace,
And guide us when perplexed,
And free us from all ills
In this world and the next

So mote it be.

Copyright Worcestershire Masonic
Library and Museum Trust

THE NATIONAL ANTHEM

God save our gracious King,
Long live our noble King,
God save the King.
Send him victorious,
Happy and glorious,
Long to reign over us ;
God save the King.

Thy choicest gifts in store
On him be pleased to pour :
Long may he reign.
May he defend our laws,
And ever give us cause
To sing with heart and voice,
God save the King.

The M.W. The Grand Master, with the Brethren assisting him, will retire in Procession.

At the Organ :

ERNEST DARBY, Mus.Doc.,
Grand Organist.

Music will be provided by the Band of H.M. Grenadier Guards (by kind permission of Colonel VISCOUNT GORT, V.C., C.B.E., D.S.O., M.V.O., M.C., commanding), under the direction of Capt. G. MILLER, L.R.A.M.

THE ROYAL MASONIC INSTITUTION FOR GIRLS.

(INSTITUTED 1788.)

Grand Patron.

HIS MAJESTY THE KING.

Grand Patroness.

HER MAJESTY THE QUEEN.

President.

HIS ROYAL HIGHNESS THE DUKE OF CONNAUGHT AND
STRATHEARN, K.G., ETC., ETC., MOST WORSHIPFUL GRAND MASTER.

Patrons (Ex-Officio).

The Right Hon. The LORD AMPHILL, G.C.S.I., G.C.I.E.,
M.W. PRO GRAND MASTER, PROV.G.M. BEDFORDSHIRE, *Vice-President.*

The Right Hon. LORD CORNWALLIS, C.B.E., D.L.,
R.W. DEPUTY GRAND MASTER, PROV.G.M. KENT, *Patron.*

Trustees.

The Right Hon. The LORD AMPHILL, G.C.S.I., G.C.I.E.,
M.W. PRO GRAND MASTER, PROV.G.M. BEDFORDSHIRE, *Vice-President.*

The Right Hon. The EARL OF DONOUGHMORE, K.P., P.C.,
P.G.W., M.W.G.M. IRELAND, *Patron.*

Treasurer.

The Right Hon. LORD MARSHALL OF CHIPSTEAD, P.C., K.C.V.O., M.A.
LL.D., P.G.W., P.G.TREAS., *Patron.*

Secretary.

MAURICE BEACHCROFT, O.B.E., M.A., P.G.D., *Patron.*

OFFICES :

31, GREAT QUEEN STREET, LONDON, W.C. 2.

Building Committee.

- A. BURNETT BROWN, P.G.D., G.S. OF W., D.P.G.M. MIDDX., *Patron*.
B. MARR JOHNSON, P.G.D., *Patron*.
Sir ALFRED ROBBINS, F.J.I., P.G.W., PRES.BD.G.P., *Vice-Patron*.
W. J. SONGHURST, P.G.D., *Patron*.
WILLIAM T. HAY, P.G.D., *Patron*.

House Committee.

The TREASURER AND TRUSTEES (*Ex-Officio*).

- A. BURNETT BROWN, P.G.D., G.S. OF W., D.P.G.M. MIDDX., *Patron*.
B. MARR JOHNSON, P.G.D., *Patron*.
Sir COLVILLE SMITH, C.V.O., G.SEC., P.G.D., *Vice-Patron*.
Sir ALFRED ROBBINS, F.J.I., P.G.W., PRES.BD.G.P., *Vice-Patron*.
Col. W. F. WYLEY, V.D., D.L., PROV. C.M. WARWICK., *Patron*.
T. A. IVES HOWELL, M.R.C.S.E., J.P., P.G.D., *Vice-President*.
C. R. I. NICHOLL, G.L.C., *Vice-Patron*.
The Right Hon. THE EARL OF BAREWOOD, K.G., D.S.O.,
P.G.W., PROV.G.M.YORKS.(W.D.), *Vice-President*.
D. C. L. FITZWILLIAMS, C.M.A., M.D., F.R.C.S.,
P.D.S.M.C., *Vice-President*.
Capt. H. F. C. CROOKSHANK, M.P., *Vice-President*.
JAMES F. TERRILL, J.G.D., *Patron*.
Capt. The Hon. GEORGE ST. V. HARRIS, M.C., P.G.W., *Vice-President*.

Finance Committee.

- J. H. DAVIDSON, P.D.G.D.C., *Patron*.
W. J. SONGHURST, P.G.D., *Patron*.
The Right Hon. LORD EBBISHAM OF COBHAM, G.B.E., J.P., P.G.W., *Patron*.
R. L. FRANKS, P.G.D., *Vice-Patron*.
GEORGE R. SAUNDERS, J.P., P.A.G.D.C., *Patron*.
HUGH C. KNOWLES, M.A., B.C.L., P.A.G.R., *Patron*.
WILLIAM T. HAY, P.G.D., *Patron*.
J. HOWELL EVANS, M.D., F.R.C.S., P.G.D., A.P.G.M. MIDDX., *Patron*.
JOHN F. CLEEVES, P.G.D., *Patron*.
GORDON P. G. HILLS, P.A.G.S. OF W., *Vice-President*.
W. J. ARMITAGE, M.A., P.G.D., *Patron*.

Petitions Committee.

- W. BADDELEY, P.A.G.D.C., *Patron.*
W. J. SONGHURST, P.G.D., *Patron.*
F. A. SARJEANT, C.B.E., J.P., P.G.T., *Vice-Patron.*
T. A. BULLOCK, P.G.D., *Patron.*
T. E. DONNE, P.A.G.D.C., *Patron.*
W. H. UNDERHILL, P.G.D., D.P.G.M. IN CHARGE, HERTS., *Vice-President.*
G. T. DEVONSHIRE, P.G.STD.B., *Vice-Patron.*
JOHN WILKINS, J.P., P.A.G.D.C., *Vice-Patron.*

Honorary Physician.

- W. ERNEST LLOYD, M.D., M.R.C.P.

Honorary Surgeons.

- W. H. C. ROMANIS, M.A., M.B., M.C. (C. NTAB.), F.R.C.S.
D. C. L. FITZWILLIAMS, C.M.G., M.D., F.R.C.S., P.D.G.D.C., *Vice-President.*
C. W. GORDON BRYAN, M.C., F.R.C.S.

Honorary Surgeon Oculists.

- M. S. MAYOU, F.R.C.S.
H. GIBB, F.R.C.S.

Honorary Throat and Ear Surgeon.

- D. F. A. NELSON, F.R.C.S.

Chaplain.

- The Rev. D. KENNEDY-BELL, D.D.

Hon. Consulting Medical Officer.

- T. A. IVES HOWELL, M.R.C.S.E., L.R.C.P., J.P., P.G.D., *Vice-President.*

Medical Officers.

- C. MELVILLE YOUNG, M.B., CH.B.
J. W. ROB, O.B.E., M.D., P.A.G.D.C.

Head Distress.

- Miss B. J. DEAN, B.A.

Matron.

- Miss F. MASON.

THE ROYAL MASONIC INSTITUTION FOR GIRLS

The Royal Masonic Institution for Girls was founded on March 25th, 1788, at a time when perhaps partly in reaction from the opposite spirit that was dominating the national life of our nearest neighbours in France, men's minds in this country were turning to constructive effort. The whole idea and its fulfilment were due mainly to the energy and influence of the Chevalier Bartholomew Ruspini, a well-known Freemason of the day. Great assistance was given by the Duke and Duchess of Cumberland, the first Patron and Patronsess of the Institution.

The first home of the Institution, then known as the Royal Cumberland Freemasons' School, was at Somers Place East, close to the present site of St. Pancras Station. Only fifteen little girls were accommodated at first, but the number rapidly increased, and in 1795 the school was removed to its second home in St. George's Fields, where it remained for over fifty-five years. In 1852 the school moved to its third home at Clapham Junction, on the top of St. John's Hill, facing Wandsworth Common, where it has been destined to remain for very nearly eighty years. Successive additions were made to the buildings in order to cope with constantly increasing pressure, and in 1918 a Junior School was opened at Weybridge.

The Senior School, of which the Foundation Stone is to be laid to-day, will therefore be the fourth home of the Institution in a period of nearly 150 years, and all who know the position at Clapham realize that a move to more commodious and healthy surroundings has long been a very urgent matter. The building fund for the new school was inaugurated in 1923, and, although a balance of some £100,000 is still required before the estimated cost of the complete structure can be met, the Committee have felt justified, in view of the support which has been received, in proceeding with the whole scheme.

When that scheme is completed the Schools at Rickmansworth and Welbybridge will provide accommodation for 520 children, together with the necessary educational and administrative staffs, out of the 1,250 children now receiving the benefits of the Institution, and the Committee hope to be able to receive into the School nearly 100 girls who, although they have already been elected, have hitherto been placed upon a waiting list until there should be room for them.

THE NEW SENIOR SCHOOL.

Following these notes will be found a plan of what is proposed, while at the commencement of the programme, and as a frontispiece, there appears a reproduction of a drawing which is exhibited in the Royal Academy this year, and which has been executed from the design of the Architects, Messrs. Denman and Son, of Brighton.

On this plan there are marked, as clearly as has been possible, the most important of the buildings which are to be erected. The Classrooms and Common Rooms form the long centre cross-piece, 620 feet long, and will be open to the South and the full advantages which that situation brings. Above them on the plan is the Assembly Hall, which will be 120 feet in length by 58 feet in width, and will be capable of accommodating all the residents in the school, while above the hall itself will be seen an indication of the Tower which will dominate the Entrance. To the left is the Chapel, to the right the Dining Hall, with Kitchens, Sculleries and Larders closely adjacent. This part of the building develops into the Administration Block, with Executive Offices and Committee Rooms on the left or Western side, while the right, or Eastern side, contains the Service Departments, such as Laundry, Boiler House, Garage, etc.

To the North of the Classrooms, and on either side of the Assembly Hall, are two open spaces or quadrangles.

To the left of that quadrangle which lies between the Chapel and the Classrooms will be seen the Music Rooms, while to the right of the other quadrangle is the building which contains the Swimming Bath, Changing Rooms and Gymnasium.

To the South of the Classrooms there extends a great semicircle of eight Houses, each to form a home for fifty girls, and containing sleeping accommodation, play rooms and the like. These Houses

are all connected by a covered way which will lead into the main corridors of the School, while between the Classrooms and the Houses there extends a great space, lying open to the South, and providing air and light for Classrooms and Houses alike.

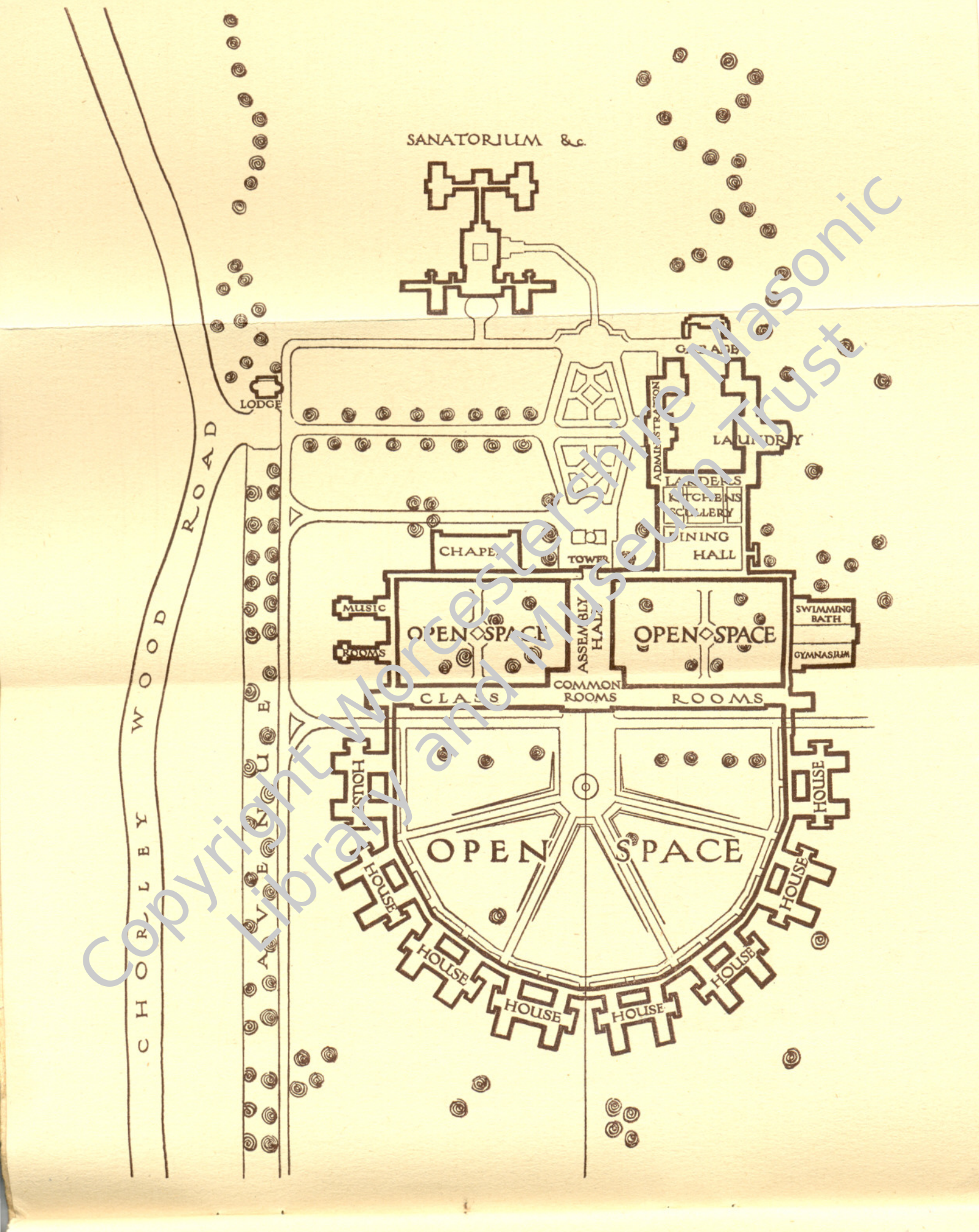
(The majority of the Houses above referred to are, to-day, well advanced in construction, and may be inspected by all visitors.)

The Chapel and Dining Hall will each be 120 feet in length and 48 feet in breadth, while the open space south of the Classrooms measures 620 feet along the base, with a maximum width of 410 feet.

(Tea, after the Ceremony, will be served in the midst of the open space mentioned above.)

The Sanatorium may be seen on the plan in the north-west corner, and will, of course, be isolated from the main buildings.

On the cover of the programme will be seen the School Crest, the design of which (by W.Bro. G. Woods Wollaston, M.V.O., Norroy King at Arms, R.G.D.), embodies the two Pillars of the Temple superimposed upon the old emblem of the School, the Pentangle. In the centre of the design is the Smooth Ashlar, while surrounding the whole is an inscription, being the Latin version of the text: "That our daughters may be as the polished Corners of the Temple."



SANATORIUM &c.

LODGE

WOOD ROAD

WOOD

WOOD

WOOD

OFFICES

LAUNDRY

ADMINISTRATION
KITCHENS
SCULLERY

DINING HALL

CHAPEL

TOWER

MUSIC ROOMS

OPEN SPACE

ASSEMBLY HALL

OPEN SPACE

SWIMMING BATH

GYMNASIUM

CLASS ROOMS

COMMON ROOMS

ROOMS

OPEN SPACE

HOUSE

HOUSE

HOUSE

HOUSE

HOUSE

HOUSE

HOUSE

HOUSE

HOUSE

Copyright Morcestershire Masonic Library and Museum Trust

RICKMANSWORTH PARK, 16th July, 1930

Programme of Music

which, by kind permission of
Col. Viscount GORT, V.C., C.B.E., D.S.O., M.V.O., M.C.,
will be played by

The

Band of H.M. Grenadier Guards

Director of Music - - - Captain G. MILLER, P.S.M., D.R.A.M.

2.15 p.m. to 3.15 p.m.

1. MARCH - - - "Entry of the Boyards" - - - *Halvorsen*
2. SELECTION "A Midsummer Night's Dream" - - - *Mendelssohn*
3. SUITE DE BALLET FROM GLÜCK'S OPERAS - - - arr. *D. Godfrey*
(1) "Don Juan." (2) "Orphée." (3) "Armide."
(4) "Iphigénie in Aulis."
4. VALSE - - - "Entre Nous" - - - *Waldteufel*
5. - - - "The Moonlight Sonata" - - - *Beethoven*
6. - - - (a) "Drink to me only with thine eyes" - arr. *Quilter*
(b) "Zaza" - - - *York Bowen*
7. EXCERPTS from "Bitter Sweet" - - - *Coward*

4.30 p.m. to 6.0 p.m.

1. GRAND MARCH "The Spirit of Pageantry" - - - *Fletcher*
2. OVERTURE - - - "Poet and Peasant" - - - *Suppe*
3. SELECTION FROM GILBERT AND SULLIVAN'S OPERAS arr. *D. Godfrey*
4. VALSE - - - "Gold and Silver" - - - *Lehar*
5. SUITE OF FOLK SONGS - - - *Vaughan Williams*
(1) "Seventeen come Sunday."
(2) (Intermezzo) "My Bonny Boy."
(3) (March) "Folk Songs from Somerset."
6. TWO DANCES from "Faust" - - - *Coleridge Taylor*
(1) Dance of the Witches (Brocken Scene).
(2) Dance and Chant (Devil's Kitchen Scene).
7. EXCERPTS from "Dear Love" - - - *Wood*
8. POLONAISE - - - *Chopin*

GOD SAVE THE KING

The Royal Masonic Institution f

MAURICE BEACHCROFT,

EELB/MW *Secretary.*

Encls.

31. Gr

TELEGRAMS: "DAUGHTERS, WESTCENT, LONDON."

TELEPHONE: HOLBORN 2644 & 2645.

23rd

Dear Bro. Eaton,

I am in receipt of your letter
date, and have now much pleasure in sending
copies of the Order of Proceedings of the
Foundation Stone at Rickmansworth for the
Worcester Provincial Library and Museum.

Yours sincerely & fr

For MAURICE

Secretary.

Charlie D. Eaton, Esq.,
Council Chambers,
109, Colmore Row,
Birmingham.